

# RUBBER-METAL-BUFFERS

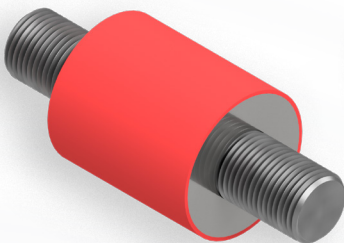
## TYPICAL APPLICATION AREAS:

- Doors, Gates
- Shutters
- Machines
- Equipment
- Motors, Gearboxes
- Stops in mechanical engineering

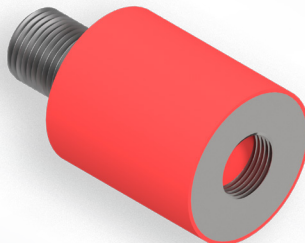
## STANDARD MATERIALS ARE:

- Elastomer: NR 45 Shore A (soft)
- Elastomer: NR 55 Shore A (medium)
- Elastomer: NR 70 Shore A (hard)
- Metal Parts: Galvanized steel
- Other materials available upon request

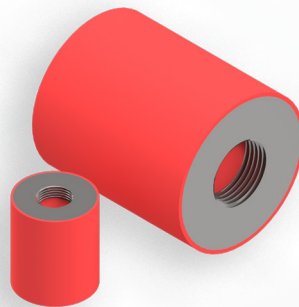
TYPE A



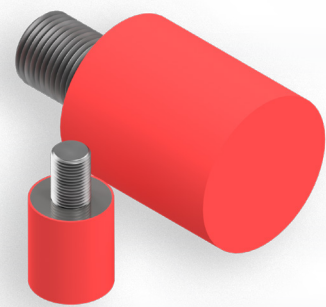
TYPE B



TYPE C



TYPE D



## TECHNICAL ADVANTAGES MAKING THE DIFFERENCE:

- Reduction of noise and vibration
- Increased machine service life
- Easy installation
- High elasticity and load-bearing capacity
- Available in various shapes and dimensions
- Can withstand compression or shear-compression loads (not suitable for tensile loads)



**Let's talk about it.**

We will check your application together.



+49 (0)7034 2518-0



[info@ulman.de](mailto:info@ulman.de)



[www.ulman.de](http://www.ulman.de)

